

RT275-2020  
Speech Therapy & Assistive Devices

Category 11  
**Assistive Services**

11-04

**Consultation - in-person - hourly rate**

This quote is for a consultation in person and is charged per hour.



**R526.30 (incl. VAT)**

11-04

**Consultation - online - hourly rate**

This quote is for a consultation conducted online, and is charged per hour.



**R292.39 (incl. VAT)**

11-05

**User Needs Assessment - in-person - hourly rate**

This quotation is for an assessment of the user's needs, conducted in-person, and is charged per hour.



**R526.30 (incl. VAT)**

11-05

**User Needs Assessment - online - hourly rate**

This quotation is for an assessment of the user's needs, conducted remotely online, and is charged per hour.



**R292.39 (incl. VAT)**

11-06

**Installation & Configuration - in-person - hourly rate**

Installation & Configuration - in-person - hourly rate



**R526.30 (incl. VAT)**

11-06

**Installation & Configuration - online - hourly rate**

Installation & Configuration - online - hourly rate

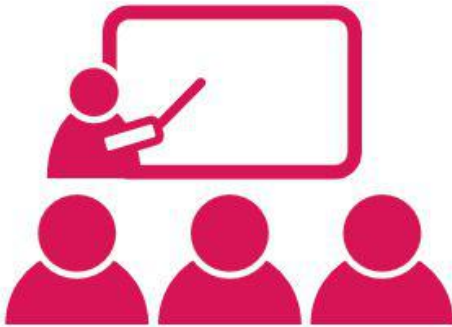


**R292.39 (incl. VAT)**

11-07

**Orientation & Training - in-person - hourly rate**

Orientation & Training - in-person - hourly rate



**R526.30 (incl. VAT)**

11-07

**Orientation & Training - online - hourly rate**

Orientation & Training - online - hourly rate

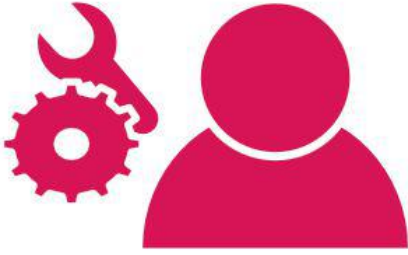


**R292.39 (incl. VAT)**

11-08

### Product Support & Maintenance - in-person - hourly rate

Product Support & Maintenance - in-person - hourly rate



**R526.30 (incl. VAT)**

11-08

### Product Support & Maintenance - online - hourly rate

Product Support & Maintenance - online - hourly rate



**R292.39 (incl. VAT)**

11-09

### Travel Costs in Major Hubs (within CT, DRB, JHB & PT)

Your location is within CT, DBN, JHB & PT or within 50km of our advisors. Rate quoted is per KM for the return trip.



**R5.85 (incl. VAT) per KM**

11-10

### Travel Costs outside Major Hubs (50-200km from CT, DRB, JHB & PT)

Your location is 50-200km from CT, DBN, JHB & PT or one of our advisors. Rate quoted is per KM for the return trip.



**R5.85 (incl. VAT) per KM**

11-11

**Travel & Accommodation - Remote (200km+ from CT, DRB, JHB & PT)**

Your location is more than 200+ KM from CT, DBN, JHB & PT or one of our advisors. Rate quoted includes the cost per KM if driving (or flight & car hire if necessary), a charge per night of accommodation & R250 per hour for time spent travelling.



**R5.85 (incl. VAT) per KM + R250/hr travelling time + accommodation**